

0211-048
 THIS INSTRUMENT PREPARED BY
 DAVID P. LINDLEY
 OF
CAULFIELD and WHEELER, INC.
 SURVEYORS - ENGINEERS - PLANNERS
 7900 GLADES ROAD, SUITE 100
 BOCA RATON, FLORIDA 33434 - (561)392-1991
 JANUARY - 2013

BOCA POINTE COUNTRY CLUB P.U.D. PLAT TWO

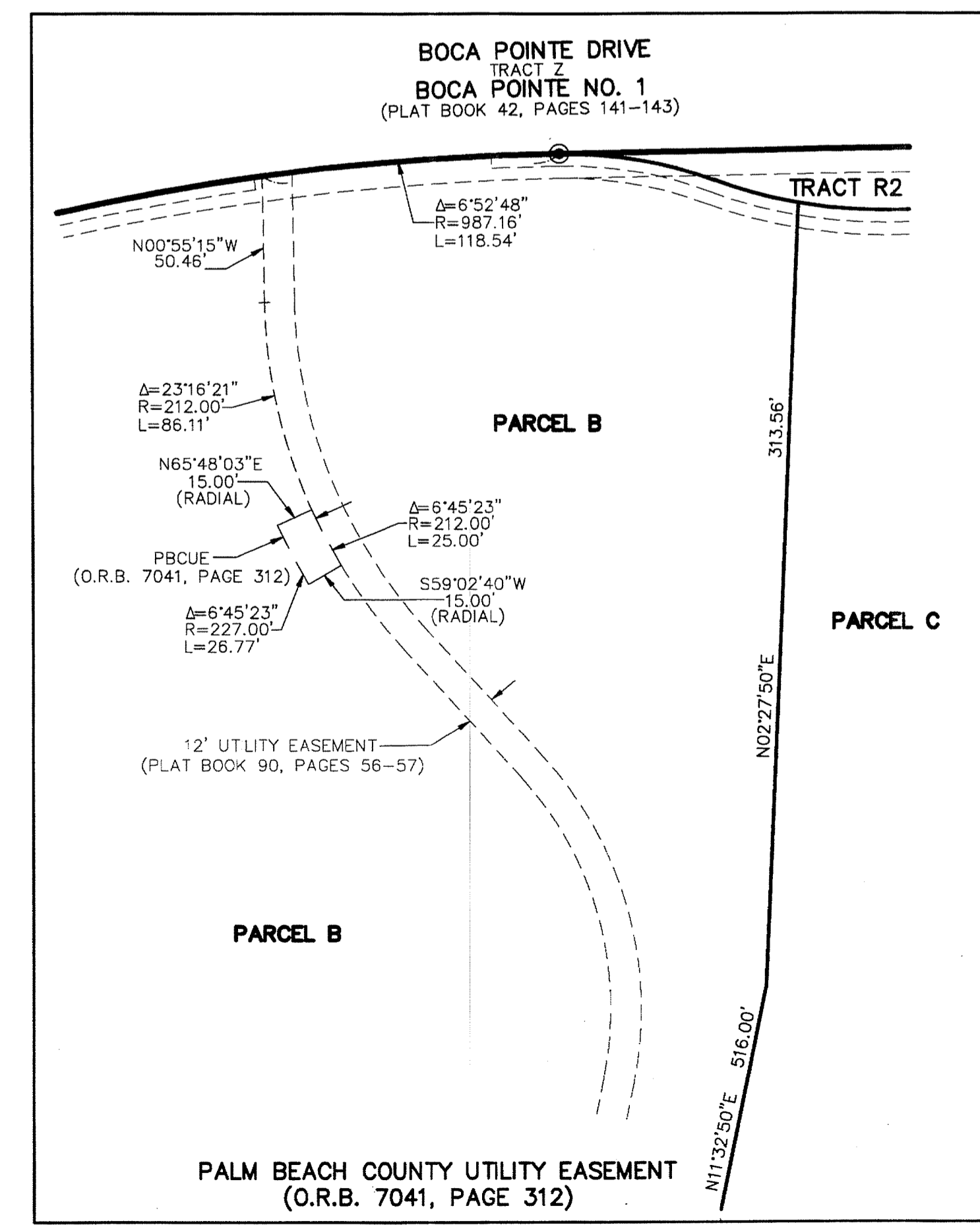
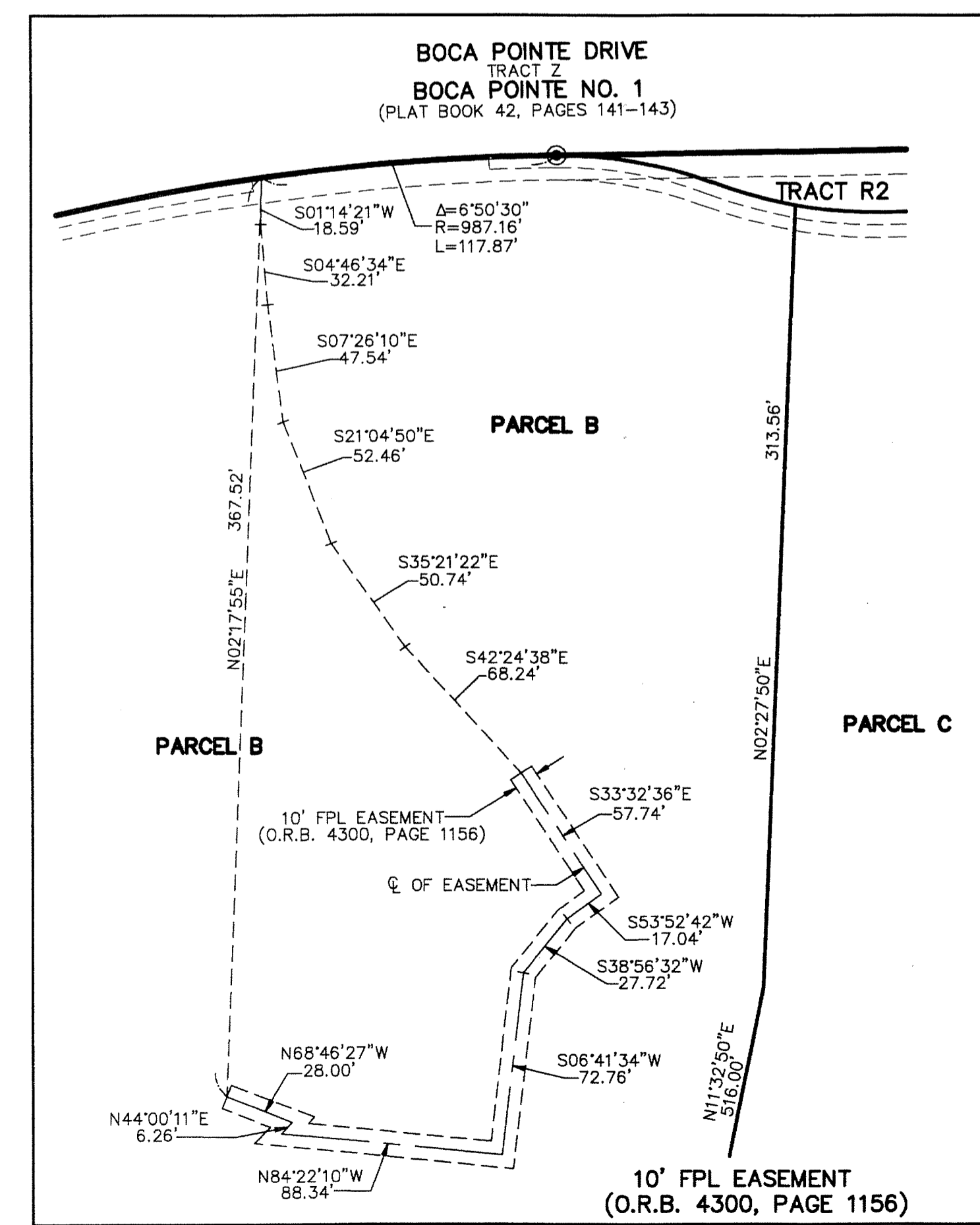
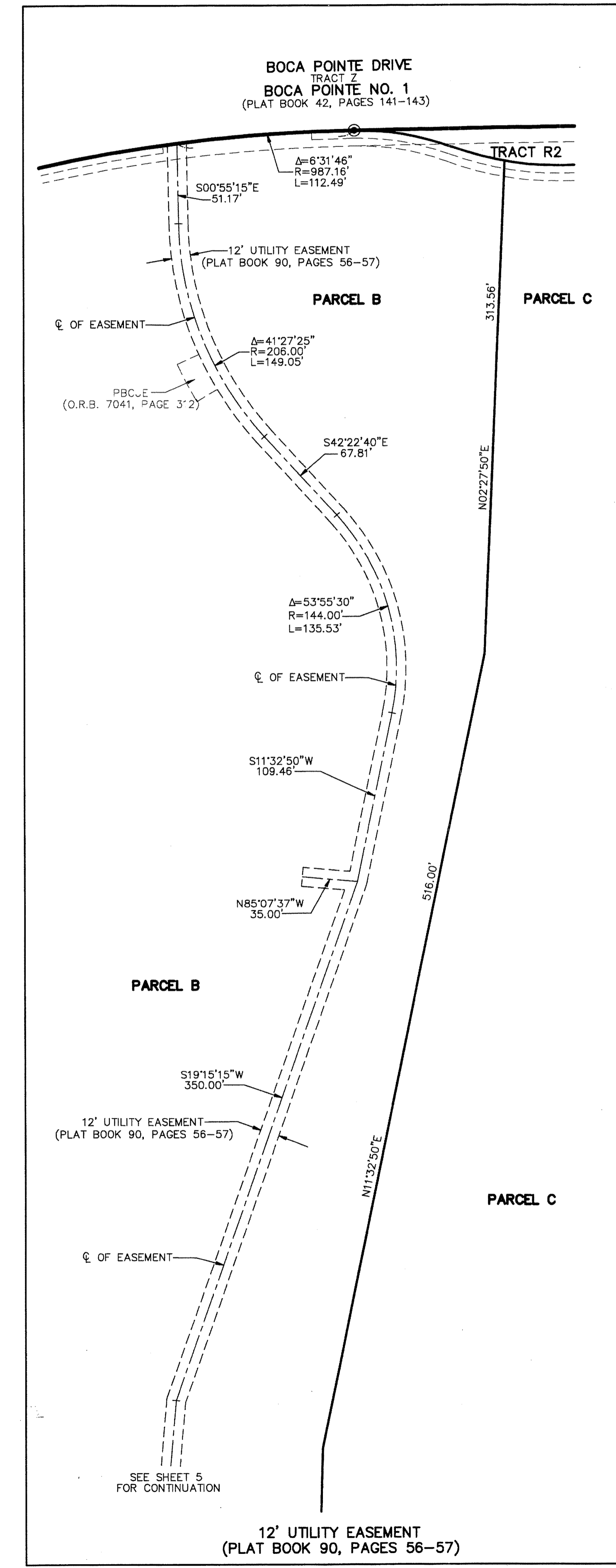
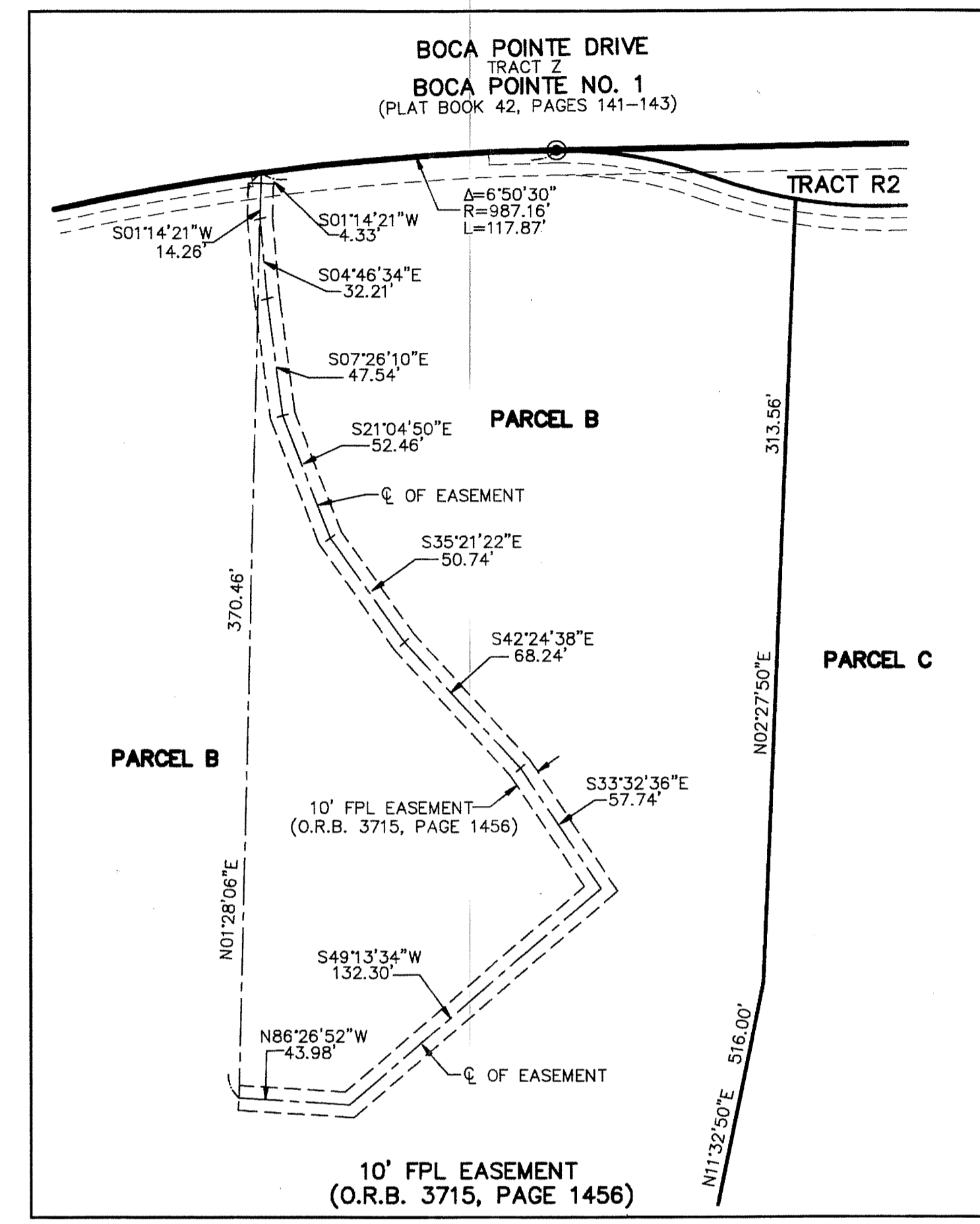
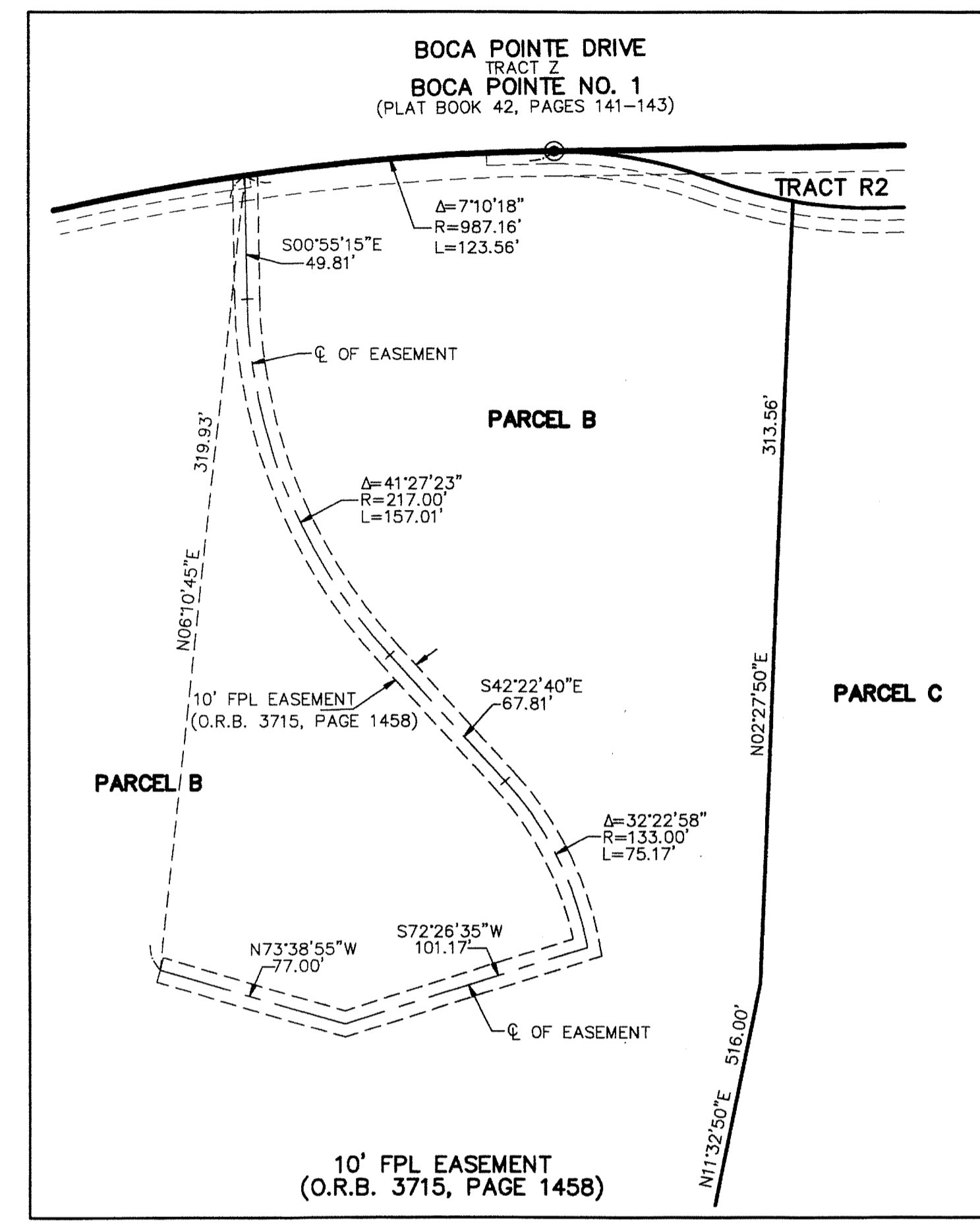
BEING A REPLAT OF TRACT X-1, BOCA POINTE NO. 1, ACCORDING TO THE PLAT THEREOF,
 AS RECORDED IN PLAT BOOK 42, PAGES 141 THROUGH 143 OF THE PUBLIC RECORDS OF PALM BEACH COUNTY, FLORIDA.
 TOGETHER WITH
 CLUBHOUSE TRACT R AND TRACT X-2-R, BOCA POINTE COUNTRY CLUB P.U.D., ACCORDING TO THE PLAT THEREOF,
 AS RECORDED IN PLAT BOOK 90, PAGES 56 AND 57 OF THE PUBLIC RECORDS OF PALM BEACH COUNTY, FLORIDA.
 LYING IN SECTION 28, TOWNSHIP 47 SOUTH, RANGE 42 EAST, PALM BEACH COUNTY, FLORIDA.

189

STATE OF FLORIDA
 COUNTY OF PALM BEACH
 THIS PLAT WAS FILED FOR
 RECORD AT _____ M.
 THIS _____ DAY OF _____
 A.D. 2014 AND DULY RECORDED
 IN PLAT BOOK _____ ON
 PAGES _____ AND _____
 SHARON R. BOCK
 CLERK AND COMPTROLLER

BY: _____
 DEPUTY CLERK

SHEET 7 OF 7



NOTES
 COORDINATES, BEARINGS AND DISTANCES
 COORDINATES SHOWN ARE GRID DATUM = NAD 83 1990
 ADJUSTMENT ZONE = FLORIDA EAST
 LINEAR UNIT = US SURVEY FEET
 COORDINATE SYSTEM 1983 STATE PLANE TRANSVERSE
 MERCATOR PROJECTION
 ALL DISTANCES ARE GROUND
 SCALE FACTOR = 1.000029298
 GROUND DISTANCE X SCALE FACTOR = GRID DISTANCE
 BEARINGS AS SHOWN HEREON ARE GRID DATUM,
 NAD 83 1990 ADJUSTMENT, FLORIDA EAST ZONE.

LEGEND/ABBREVIATIONS
 C - CENTERLINE
 Δ - DELTA (CENTRAL ANGLE)
 FPL - FLORIDA POWER & LIGHT CO.
 L - ARC LENGTH
 LB - LICENSED BUSINESS
 O.R.B. - OFFICIAL RECORD BOOK
 R - RADIUS
 LAE - LIMITED ACCESS EASEMENT
 PBCUE - PALM BEACH COUNTY UTILITY EASEMENT
 ■ PRM - DENOTES PERMANENT REFERENCE MONUMENT
 4" x 4" x 24" CONCRETE MONUMENT
 ● PCP - DENOTES PERMANENT CONTROL POINT
 NAIL AND METAL DISK STAMPED LB3591
 ● - DENOTES SET IRON ROD WITH CAP LB3591

